

Nova Flex channels help achieve the perfect look for any application. Create a fixture, diffuse light with lenses, or add another level of protection. Includes mounting clips, end caps, and choice of clear or soft lens. Sold in 1m or 2m sections.

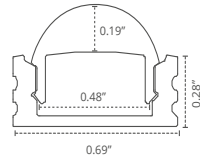
Job Name:

Type:

LOW PROFILE: NF-T-LP-1M/2M

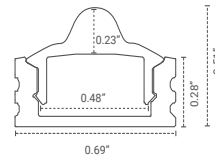
Our most popular low-profile channel
Compatibility: Design 64, 128, 160; Pro 60, 120;
Dynamic White 60, White 120

60° ROUND LENS



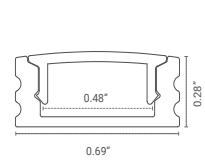
NF-T-C/CLEAR/SNAP-LP-60-1M/2M

30° ROUND LENS



NF-T-C/CLEAR/SNAP-LP-30-1M/2M

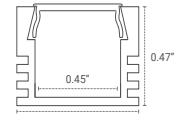
STANDARD LENS



NF-T-C/CLEAR/SNAP-LP-1M/2M
NF-T-C/SOFT/SNAP-LP-1M/2M

STANDARD: NF-T-S/SNAP-1M/2M

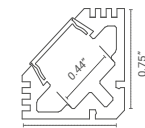
Our most popular channel
Compatibility: Design 64, 128, 160; Pro 60, 120;
Dynamic White 60, White 120



NF-T-C/CLEAR/SNAP-1M/2M
NF-T-C/SOFT/SNAP-1M/2M

ANGLED: NF-T-A/SNAP-1M/2M

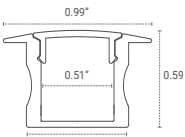
Mounts at a 45° angle
Compatibility: Design 64, 128, 160; Pro 60, 120;
Dynamic White 60, White 120



NF-T-C/CLEAR/SNAP-1M/2M
NF-T-C/SOFT/SNAP-1M/2M

WINGED: NF-T-DW/SNAP-1M/2M

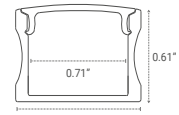
For recessed applications
Compatibility: Design 64, 128, 160; Pro 60, 120;
Dynamic RGB, White 60, White 120



NF-T-C/CLEAR/SNAP-DW-1M/2M
NF-T-C/SOFT/SNAP-DW-1M/2M

DEEP: NF-T-D/SNAP-1M/2M

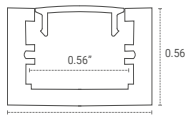
Our widest channel
Compatibility: All



NF-T-C/CLEAR/SNAP-D-1M/2M
NF-T-C/SOFT/SNAP-D-1M/2M

LIGHT BAR: NF-T-LB-1M/2M

Our most popular fixture channel
Compatibility: All
End cap extends 0.38" from end of track



NF-T-C/CLEAR-LB-1M/2M
NF-T-C/SOFT-LB-1M/2M

PANEL OPTIONS

CLEAR 5% LIGHT LOSS



SOFT 20% LIGHT LOSS



MOUNTING CLIPS

Mounting clips snap on to the back of aluminum channels and can slide to desired location
Note: Light Bar mounts at end caps.

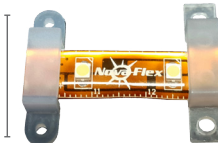
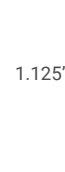


RIBBON SUPPORT CLIPS

Provide extra support for projects without channels. Available in Soft and Hard
Note: Only Soft clips work with 240 and RGB Series

NF-CLIPS-S

NF-CLIPS-H



Clips add 0.125" to height of lights