

# FLEX LINE 120V SERIES

The Nova Flex 120V is a power direct input, easy for hot plug in/out without any additional power. Soft PVC housing with strong weather resistance, non-yellow change and fire resistive character. Rated for Wet Location, Water Spray and Rain.



PRODUCT CODE	LUMENS/FT	EFFICACY
NF-LINE-O-70-120V-2700K	309	84
NF-LINE-O-70-120V-3000K	307	84
NF-LINE-O-70-120V-3500K	333	91
NF-LINE-O-70-120V-4000K	325	89
NF/SP-LINE-O-70-120V-5000K	337	92
NF-LINE-O-70-120V-6500K	334	91



## PHYSICAL

Operating Temp	-4° F to +113° F (-20° C to +45° C)
Class II Max Run	164 ft (50M)
CRI	80+
Cut Length	7.87 in (0.2M)
Environment	IP68
Beam Angle	120°
Mounting	Clips / Channels

Width	0.63 in (16 mm)
Height	0.30 in (7.5 mm)

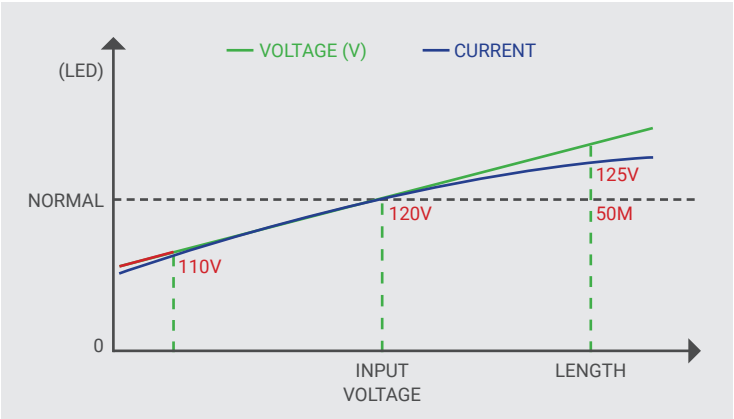


## ELECTRICAL

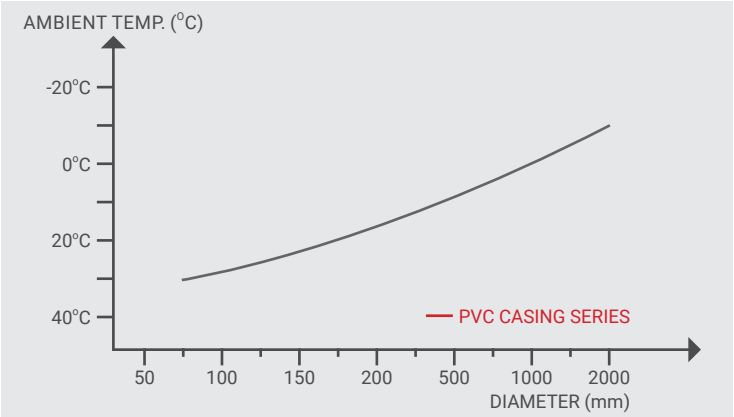
Input Voltage	120VAC
Power Consumption	3.66 w/ft
LEDs/Meter	70
LED Quantity	21 LEDs/ft
Lamp Life	20,000+ hours
Certifications	UL Listed



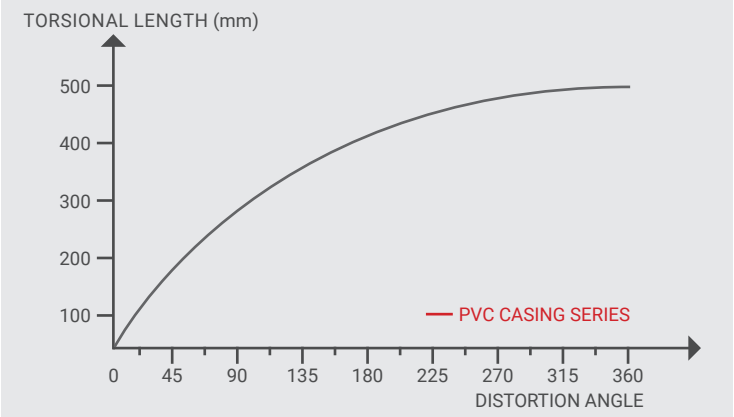
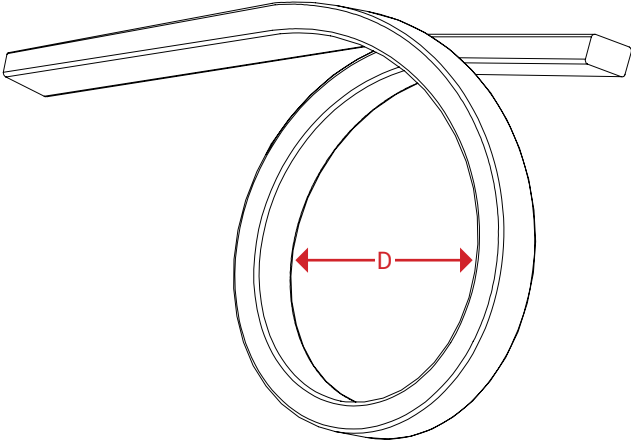
# FLEX LINE 120V SERIES



Operating Characteristic Curve

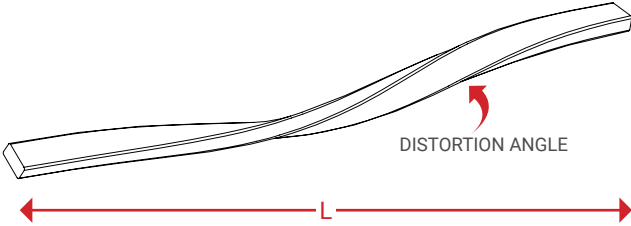


Camber Curve



Torsional Stiffness Curve

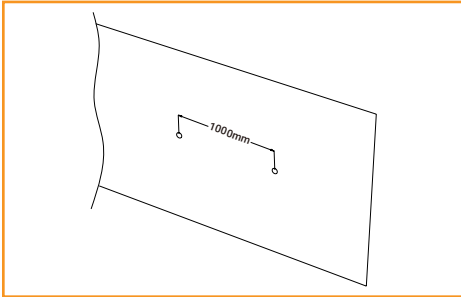
The above torsional angle data is based on the temperature environment more than 0°C



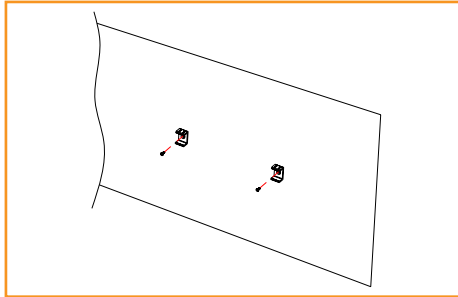
# FLEX LINE 120V SERIES

## INSTALLATION

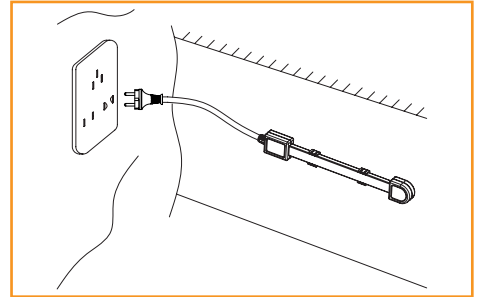
Please read the instructions before use.



Position the screw hole every 1 meter for installation.



Install clips and screws on 1 meter markings.

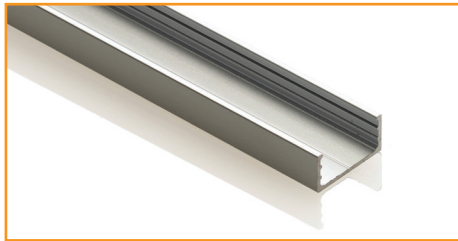


Snap ribbon into clips or channel and its ready to plug-in.

## ACCESSORIES



Clips & Screws



120V Aluminum Channel

## NOTICE: SAFETY INSTRUCTIONS

- Do not cover this product as the covering may cause the flexible light to overheat and melt or ignite
- Do not operate with the flexible light tightly coiled.
- Do not puncture, cut, shorten, or splice the flexible lighting.
- Do not route the cord or flexible lighting through walls, doors, windows or any like part of the building structure
- Do not use if there is any damage to the light or cord insulation. Inspect periodically.
- Do not submerge flexible light in liquids, or use the product in the vicinity of standing water or other liquids.
- Secure this flexible light using only the hangers or clips provided. Do not secure this product or its cord with staples, nails, or like means that may damage the insulation or permanently attach to the building structure.
- Do not subject flexible lighting to continuous flexing.
- This product has a polarized plug (one blade is wider than the other) as a feature to reduce the risk of electric shock. This plug will fit in a polarized outlet only one way. If the plug does not fit fully in the outlet, reverse the plug. If it still does not fit, contact a qualified electrician. Does not use with an extension cord unless plug can be fully inserted. Do not alter or replace the plug." This item may be omitted if the product does not employ a polarized plug **WARNING**.
- When using outdoor use portable lighting products, basic safety precautions should always be followed to reduce the risk of fire, electric shock, and personal injury, including the following:
  - Ground Fault Circuit Interrupter (GFCI) protection should be provided on the circuits or outlet to be used for the outdoor use flexible lighting product. Receptacles are available having built-in GFCI protection for this measure of safety.
  - Use only outdoor extension cords, such as type SW, SOW, STW, STOW, SJW, SJOW, SJTW, or SJTOW. This designation is marked on the wire of the extension cord.
  - Risk of fire and electric shock. Uncoil flexible light prior to plugging into receptacle.