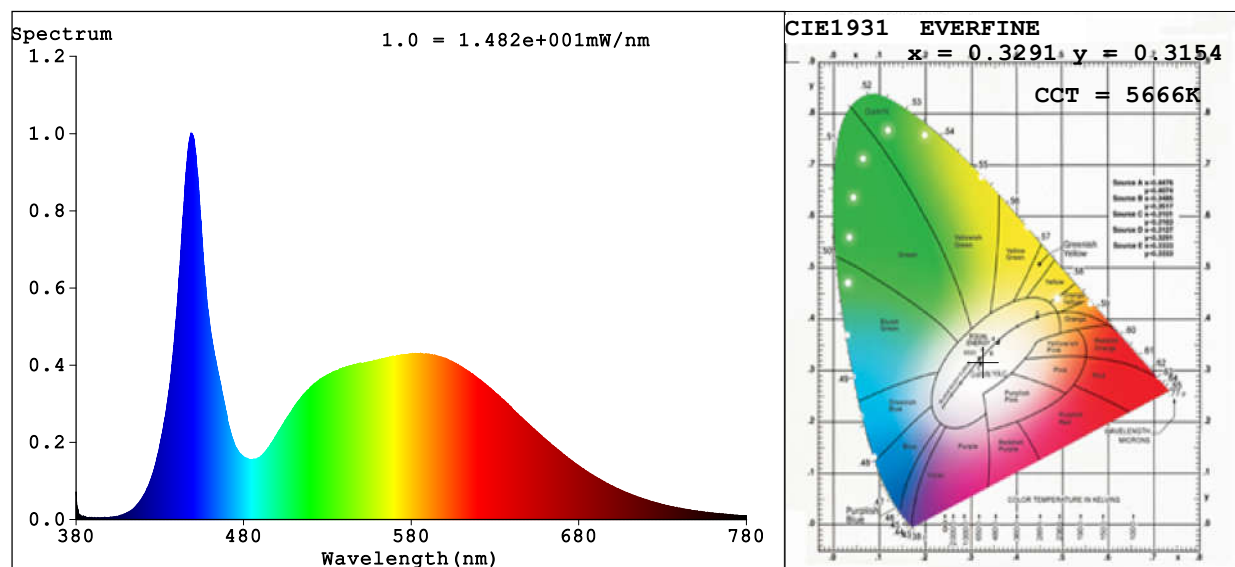


LEDspec Test Report



Colorimetric Parameters

Chromaticity Coordinate: $x=0.3291$ $y=0.3154$ $u'=0.2149$ $v'=0.4633$

$CCT=5666K$ ($Duv=-0.0123$) Dominant WL: $L_d = 563.2nm$ Purity=6.7%

Peak WL: $L_p=449.1nm$ FWHM=20.6nm

Render Index: $R_a=87.4$ CRI=82.9

R1 =91 R2 =89 R3 =85 R4 =89 R5 =91 R6 =82 R7 =88

R8 =84 R9 =54 R10=72 R11=89 R12=66 R13=90 R14=91 R15=92

Photometric & Radiometric Parameters

Flux=406.7 lm Eff.:72.09 lm/W $Fe=1.423$ W

Electrical parameters

V=24.00 V I=0.2351 A P=5.642 W PF=1.000 F=0.00 Hz

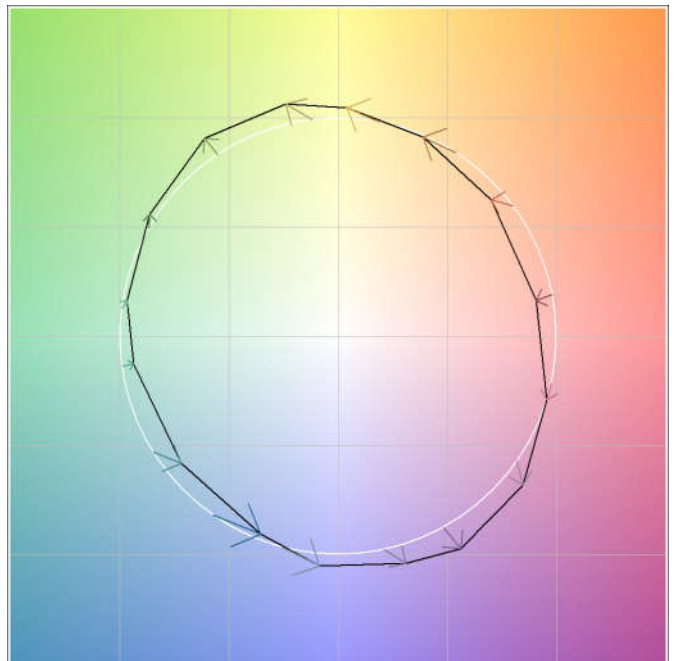
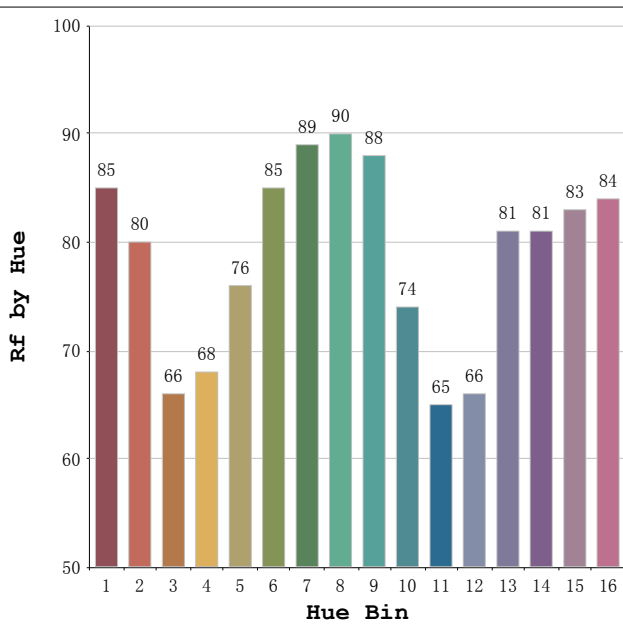
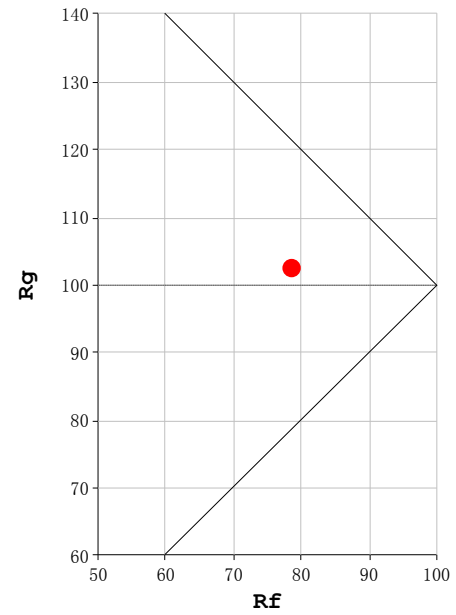
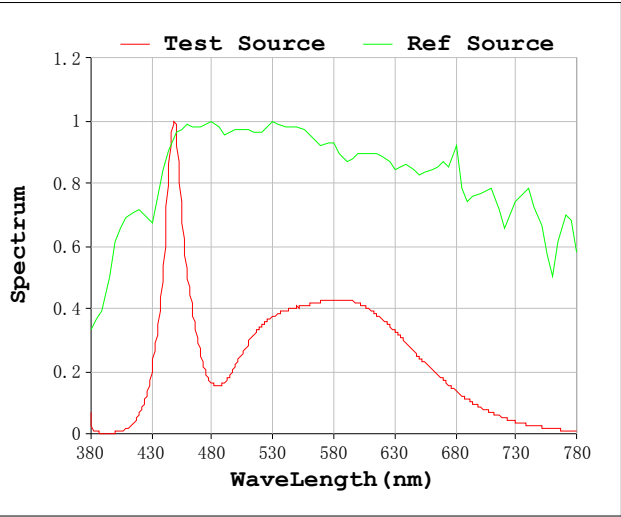
LEVEL:OUT WHITE:OUT

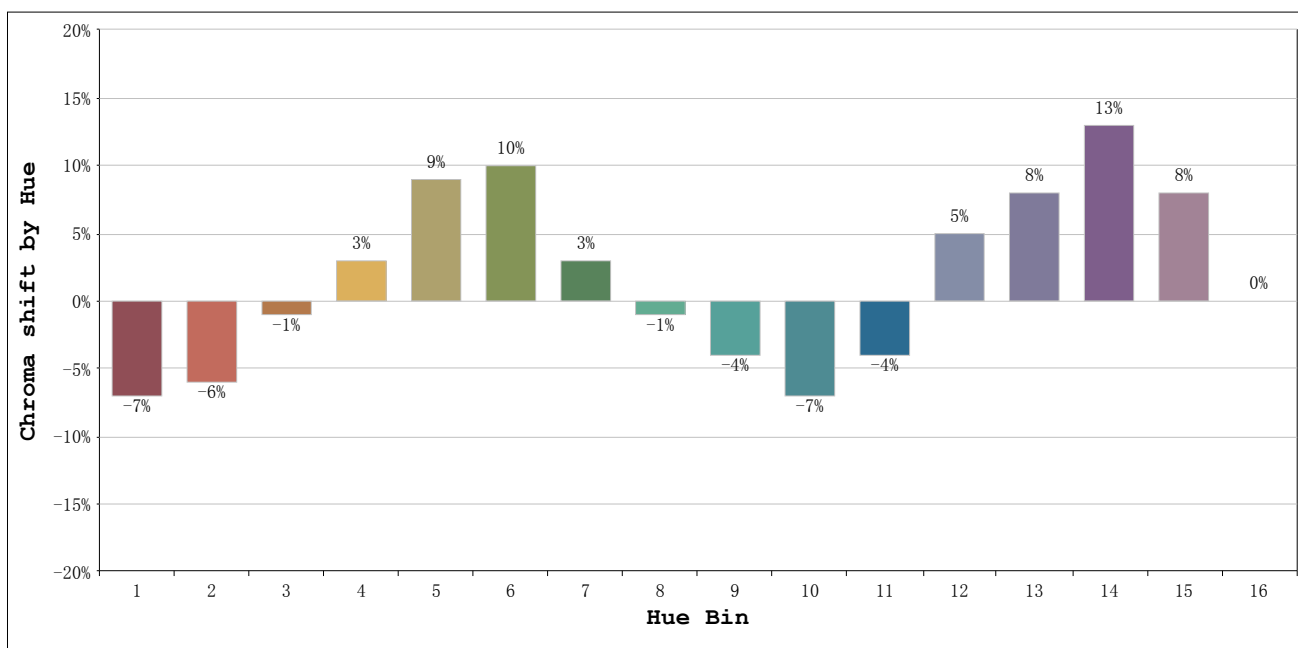
Status: Integral T = 28 ms $I_p = 50785$ (77%)

Test Mode: Accuracy Test; Sensitivity = High; Tecool: ON

Date:2017-09-26 14:54:40

Rf: 79 **CCT: 5666 K** **u': 0.2149**
Rg: 103 **Duv: -0.0123** **v': 0.4633**





Hue Bin	Hue Angle	Rf	Graphic shift(%)	
			Chroma	Hue
1	0. 0° - 22. 5°	85	-7	0
2	22. 5° - 45. 0°	80	-6	8
3	45. 0° - 67. 5°	66	-1	17
4	67. 5° - 90. 0°	68	3	16
5	90. 0° - 112. 5°	76	9	10
6	112. 5° - 135. 0°	85	10	1
7	135. 0° - 157. 5°	89	3	-4
8	157. 5° - 180. 0°	90	-1	-3
9	180. 0° - 202. 5°	88	-4	0
10	202. 5° - 225. 0°	74	-7	11
11	225. 0° - 247. 5°	65	-4	23
12	247. 5° - 270. 0°	66	5	18
13	270. 0° - 292. 5°	81	8	9
14	292. 5° - 315. 0°	81	13	1
15	315. 0° - 337. 5°	83	8	-6
16	337. 5° - 360. 0°	84	0	-7