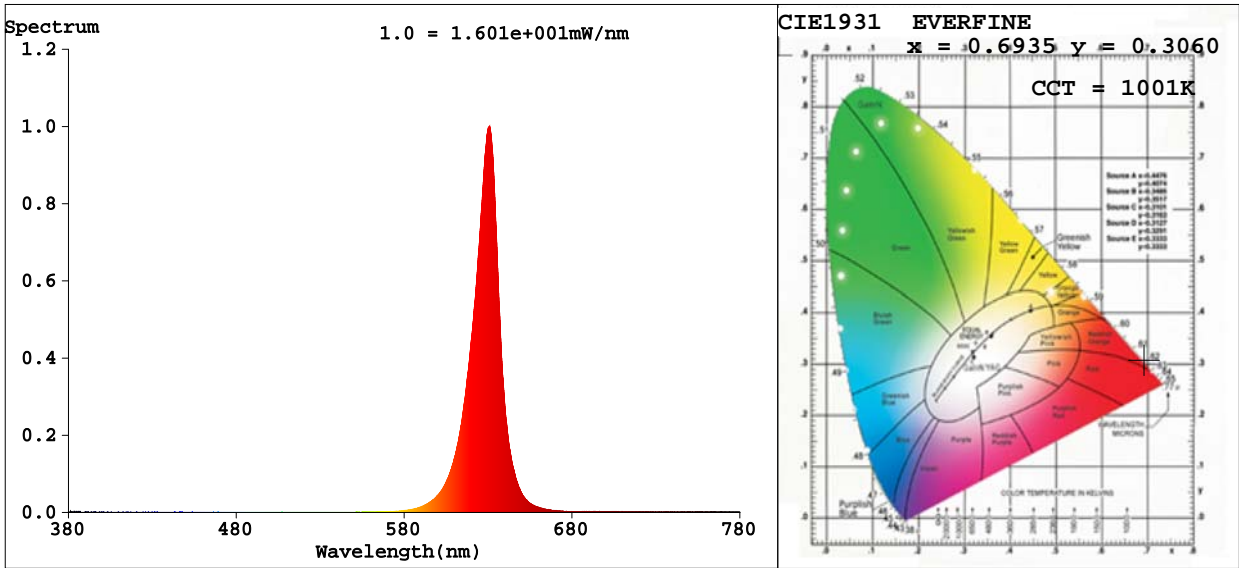


Light Source Test Report

Length = 1M



Colorimetric Parameters

Chromaticity Coordinate:x=0.6935 y=0.3060/u'=0.5248 v'=0.5211
CCT=1001K(Duv=-0.0772) Dominant WL:Ld =621.2nm Purity=99.9%
Peak WL:Lp=630.9nm FWHM=15.7nm
Render Index:Ra=26.7 Lav=628.7nm
R1 =7 R2 =78 R3 =31 R4 =0 R5 =2 R6 =90 R7 =6
R8 =0 R9 =0 R10=71 R11=0 R12=79 R13=30 R14=60 R15=0

Photometric & Radiometric Parameters

Flux=64.66 lm Eff.:17.88 lm/W Fe=315.2 mW Scotopic:3.526 S/P:0.054535

Electrical parameters

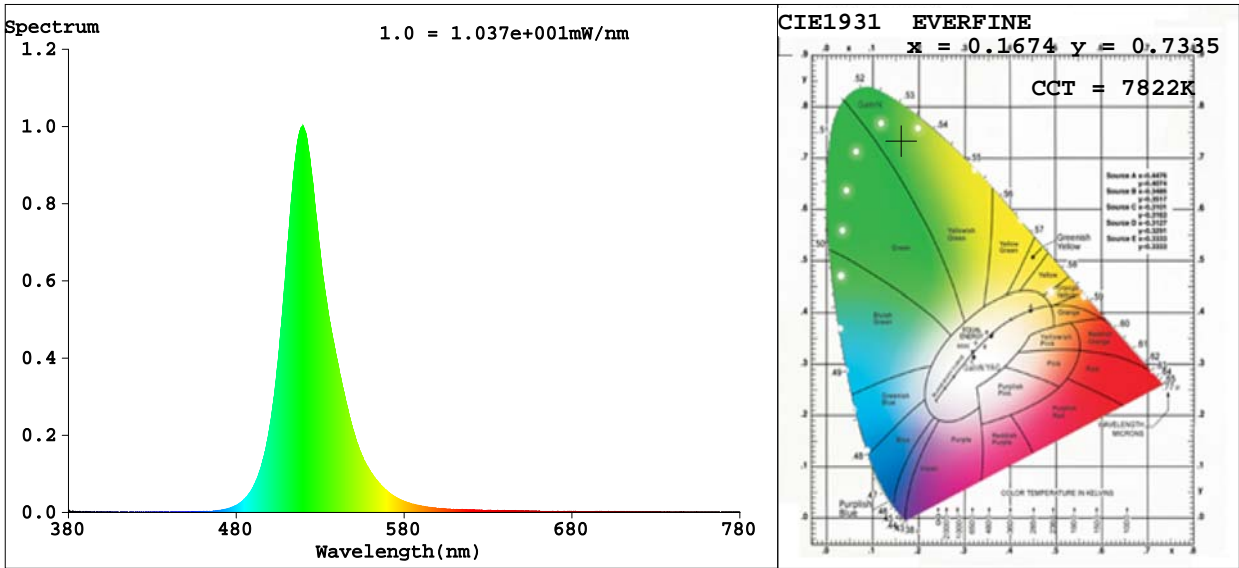
V=24.00 V I=0.1507 A P=3.616 W PF=1.000 F=0.00 Hz

WHITE:OUT

Status: Integral T = 253 ms Ip = 51716 (79%)
Test Mode: Fast Test; Sensitivity = High; Tecool: ON

Light Source Test Report

Length = 1M



Colorimetric Parameters

Chromaticity Coordinate:x=0.1674 y=0.7335/u'=0.0584 v'=0.5757
CCT=7822K(Duv=0.1592) Dominant WL:Ld =527.2nm Purity=82.6%
Peak WL:Lp=519.7nm FWHM=28.3nm
Render Index:Ra=0.0 Lav=522.8nm
R1 =0 R2 =0 R3 =0 R4 =0 R5 =0 R6 =0 R7 =0
R8 =0 R9 =0 R10=0 R11=0 R12=0 R13=0 R14=35 R15=0

Photometric & Radiometric Parameters

Flux=176.2 lm Eff.:41.80 lm/W Fe=361.2 mW Scotopic:498.16 S/P:2.8267

Electrical parameters

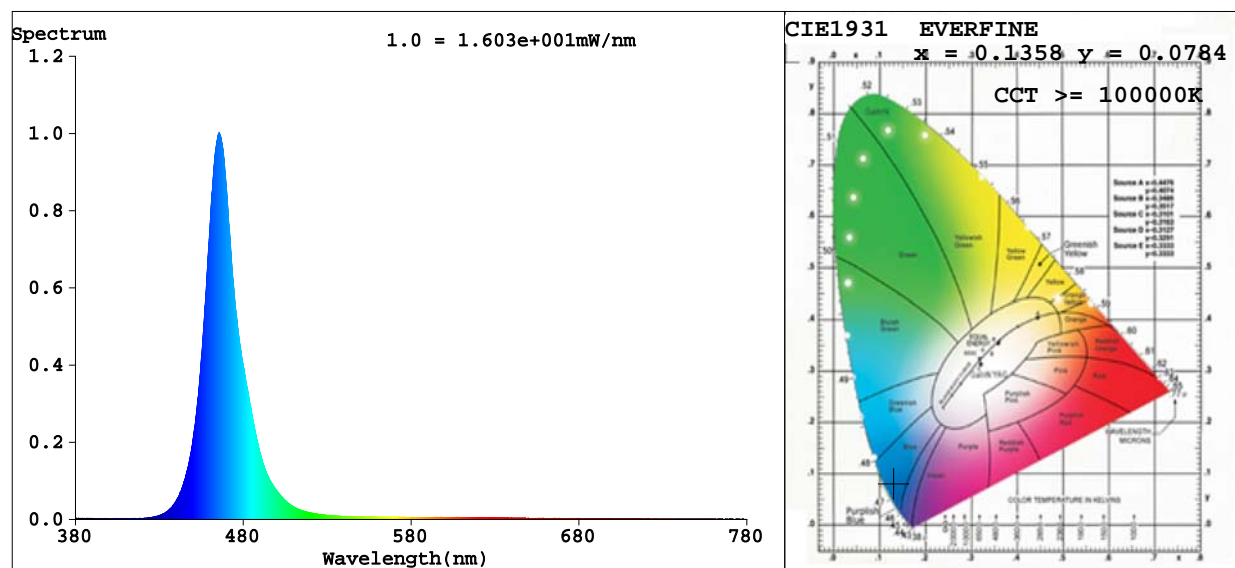
V=24.00 V I=0.1757 A P=4.216 W PF=1.000 F=0.00 Hz

WHITE:OUT

Status: Integral T = 395 ms Ip = 52553 (80%)
Test Mode: Fast Test; Sensitivity = High; Tecool: ON

Light Source Test Report

Length = 1M



Colorimetric Parameters

Chromaticity Coordinate: $x=0.1358$ $y=0.0784$ $u'=0.1480$ $v'=0.1923$

CCT=100000K (Duv=0.1415) Dominant WL: $\lambda_d = 470.7\text{nm}$ Purity=93.6%

Peak WL: $\lambda_p = 465.6\text{nm}$ FWHM=20.2nm

Render Index: $R_a=5.3$ $\lambda_{av}=468.0\text{nm}$

R1 =15	R2 =0	R3 =0	R4 =0	R5 =28	R6 =0	R7 =0	
R8 =0	R9 =0	R10=0	R11=0	R12=0	R13=0	R14=0	R15=20

Photometric & Radiometric Parameters

Flux=35.34 lm Eff.:8.63 lm/W $\Phi_e=422.8\text{ mW}$ Scotopic:467.53 S/P:13.23

Electrical parameters

V=24.00 V I=0.1706 A P=4.094 W PF=1.000 F=0.00 Hz

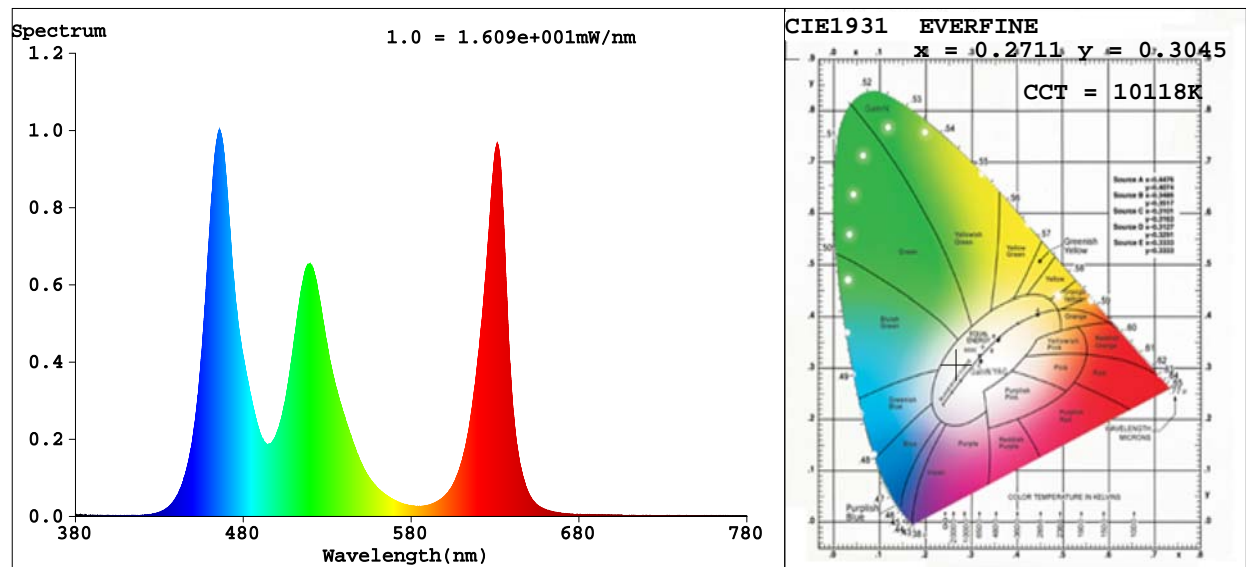
WHITE:OUT

Status: Integral T = 395 ms $I_p = 57357$ (88%)

Test Mode: Fast Test; Sensitivity = High; Tecool: ON

Light Source Test Report

Length = 1M



Colorimetric Parameters

Chromaticity Coordinate: $x=0.2711$ $y=0.3045$ $u'=0.1774$ $v'=0.4484$

CCT=10118K(Duv=0.0140) Dominant WL:Ld =485.5nm Purity=23.3%

Peak WL:Lp=465.9nm FWHM=20.3nm

Render Index:Ra=48.4 Lav=518.5nm

R1 =33 R2 =63 R3 =75 R4 =50 R5 =53 R6 =56 R7 =55

R8 =0 R9 =0 R10=15 R11=41 R12=64 R13=38 R14=82 R15=18

Photometric & Radiometric Parameters

Flux=272.4 lm Eff.:22.87 lm/W Fe=1.091 W Scotopic:967.19 S/P:3.5502

Electrical parameters

V=24.00 V I=0.4964 A P=11.91 W PF=1.000 F=0.00 Hz

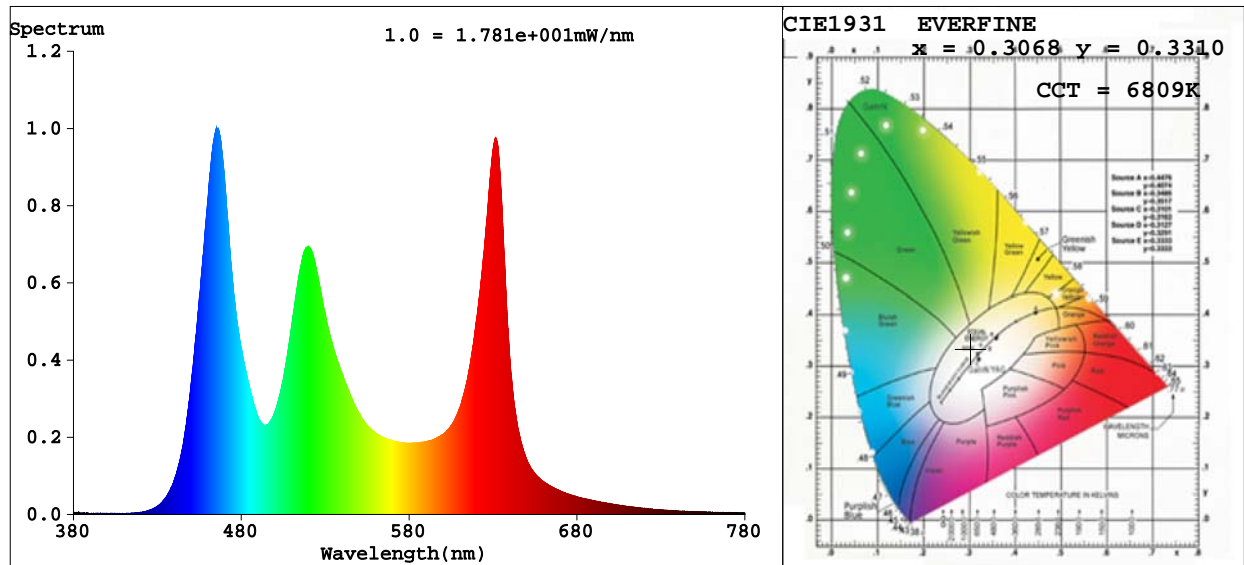
WHITE:OUT

Status: Integral T = 266 ms Ip = 52717 (80%)

Test Mode: Fast Test; Sensitivity = High; Tecool: ON

Light Source Test Report

Length = 1M



Colorimetric Parameters

Chromaticity Coordinate: $x=0.3068$ $y=0.3310$ $u'=0.1930$ $v'=0.4685$

CCT=6809K (Duv=0.0072) Dominant WL: $\lambda_d = 490.6\text{nm}$ Purity=9.1%

Peak WL: $\lambda_p = 465.2\text{nm}$ FWHM=23.8nm

Render Index: $R_a = 69.4$ $\lambda_{av} = 529.0\text{nm}$

R1 =60 R2 =78 R3 =89 R4 =68 R5 =70 R6 =72 R7 =75

R8 =44 R9 =0 R10=52 R11=61 R12=69 R13=63 R14=91 R15=53

Photometric & Radiometric Parameters

Flux=440.9 lm Eff.:28.11 lm/W $F_e = 1.599\text{ W}$ Scotopic:1253.7 S/P:2.8438

Electrical parameters

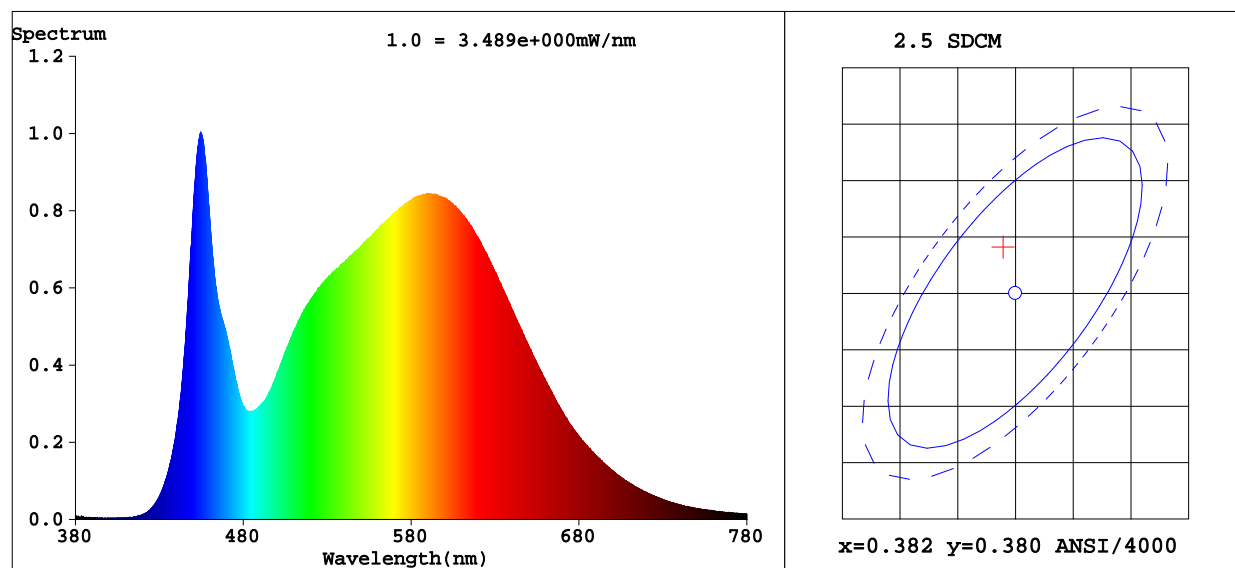
V=24.00 V I=0.6535 A P=15.68 W PF=1.000 F=0.00 Hz

WHITE:ANSI_6500K

Status: Integral T = 266 ms $I_p = 58859$ (90%)

Test Mode: Fast Test; Sensitivity = High; Tecool: ON

TM30 Test Report Length = 1M

**Colorimetric Parameters**Chromaticity Coordinate: $x=0.3807$ $y=0.3838$ $u'=0.2225$ $v'=0.5047$

CCT=4041K (Duv=0.0032) Dominant WL:Ld =577.3nm Purity=29.4%

Peak WL:Lp=454.7nm FWHM=22.6nm

Render Index: Ra=82.5 Lav=570.1nm

R1 =81 R2 =90 R3 =96 R4 =79 R5 =80 R6 =85 R7 =86

R8 =64 R9 =9 R10=75 R11=77 R12=55 R13=83 R14=98 R15=75

Photometric & Radiometric Parameters

Flux=173.4 lm Eff.:45.07 lm/W Fe=524.5 mW Scotopic:295.74 S/P:1.7058

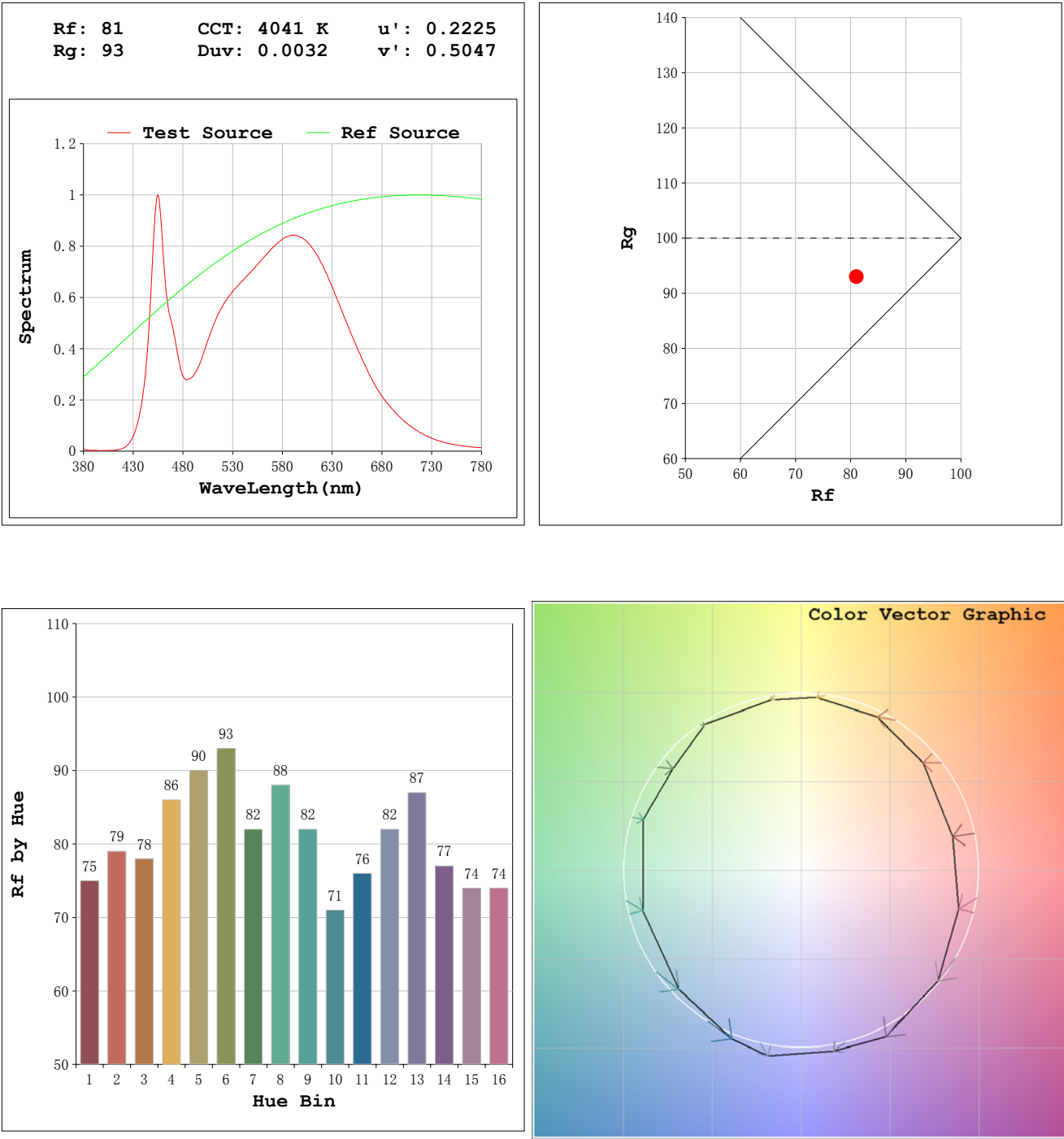
Electrical parameters

V=24.00 V I=0.1603 A P=3.847 W PF=1.000 F=0.00 Hz

WHITE:ANSI_4000K

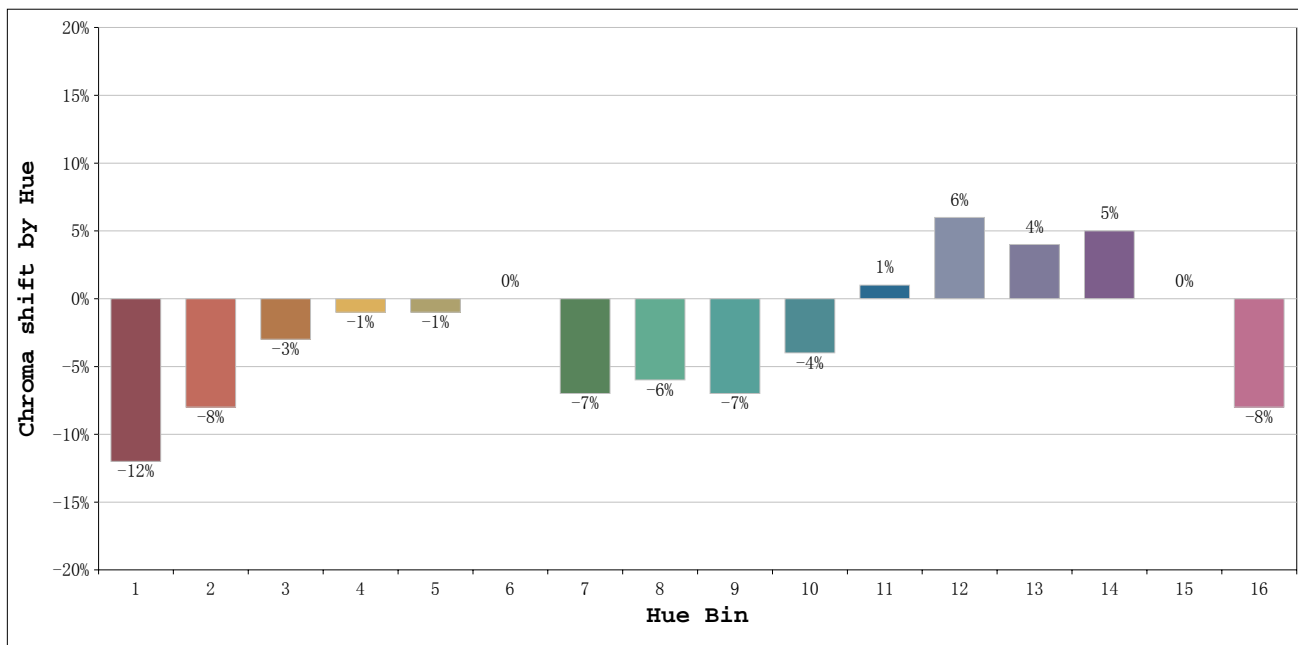
Status: Integral T = 1239 ms Ip = 51507 (79%)

Test Mode: Fast Test; Sensitivity = High; Tecool: ON









Hue Bin	Hue Angle	Rf	Graphic shift(%)	
			Chroma	Hue
1	0.0° - 22.5°	75	-12	1
2	22.5° - 45.0°	79	-8	6
3	45.0° - 67.5°	78	-3	10
4	67.5° - 90.0°	86	-1	5
5	90.0° - 112.5°	90	-1	2
6	112.5° - 135.0°	93	0	-1
7	135.0° - 157.5°	82	-7	-3
8	157.5° - 180.0°	88	-6	0
9	180.0° - 202.5°	82	-7	8
10	202.5° - 225.0°	71	-4	15
11	225.0° - 247.5°	76	1	17
12	247.5° - 270.0°	82	6	6
13	270.0° - 292.5°	87	4	-6
14	292.5° - 315.0°	77	5	-14
15	315.0° - 337.5°	74	0	-15
16	337.5° - 360.0°	74	-8	-7