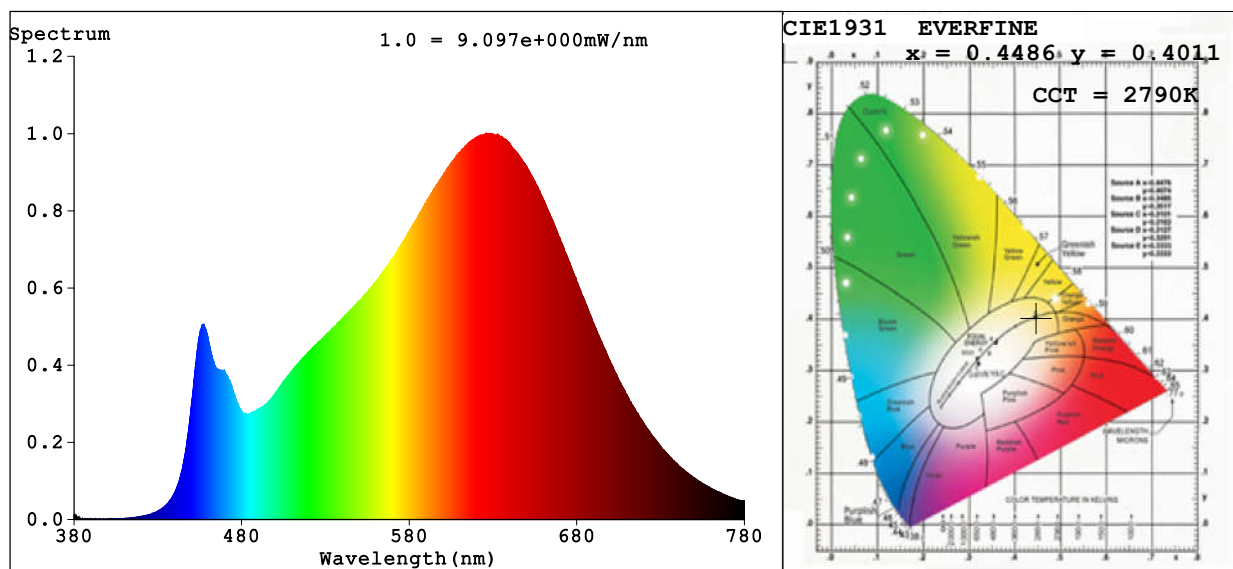


## LEDspec Test Report



### Colorimetric Parameters

Chromaticity Coordinate:  $x=0.4486$   $y=0.4011$   $u'=0.2594$   $v'=0.5220$

CCT=2790K (Duv=-0.0025) Dominant WL:Ld =584.7nm Purity=55.0%

Peak WL:Lp=629.2nm FWHM=155.3nm

Render Index:Ra=93.8 CRI=92.5

R1 =97 R2 =99 R3 =96 R4 =93 R5 =96 R6 =95 R7 =90

R8 =85 R9 =72 R10=99 R11=95 R12=82 R13=98 R14=99 R15=93

### Photometric & Radiometric Parameters

Flux=423.8 lm Eff.:90.89 lm/W Fe=1.581 W

### Electrical parameters

V=24.00 V I=0.1943 A P=4.663 W PF=1.000 F=0.00 Hz

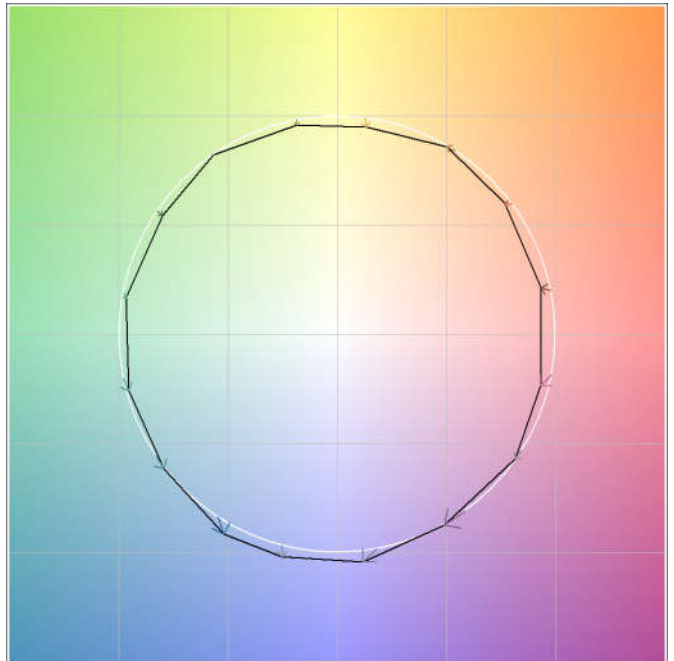
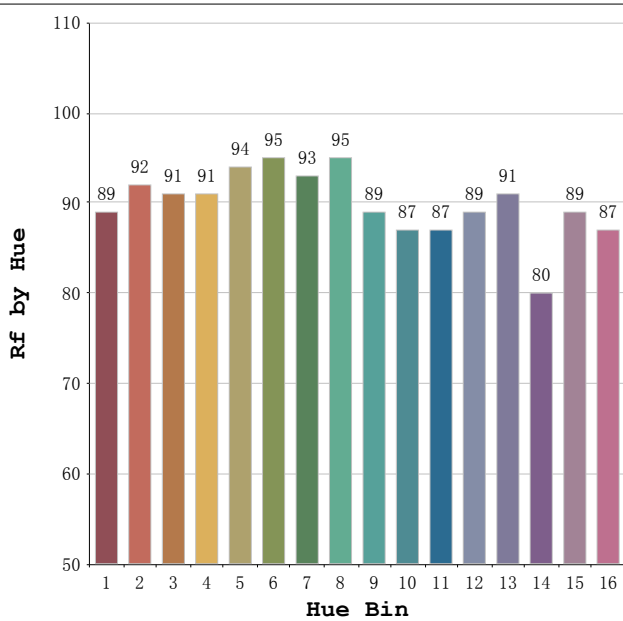
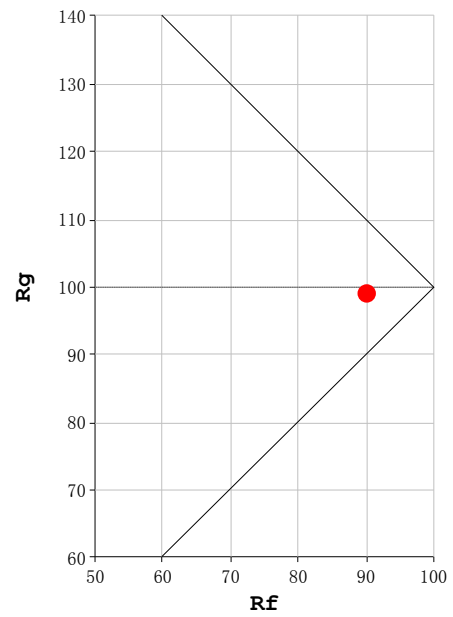
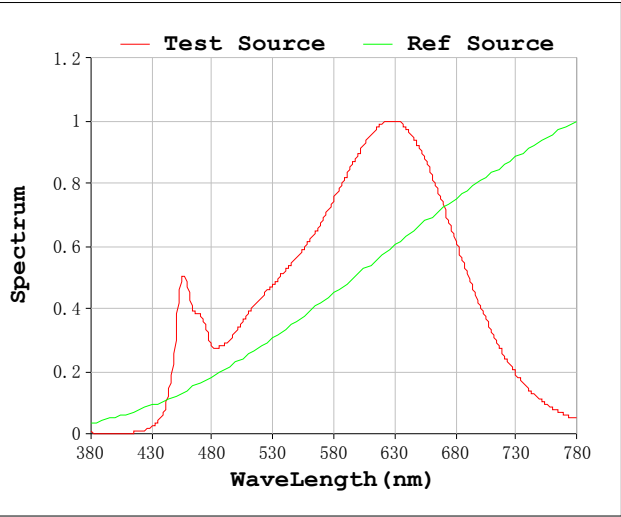
LEVEL:OUT WHITE:ANSI\_2700K

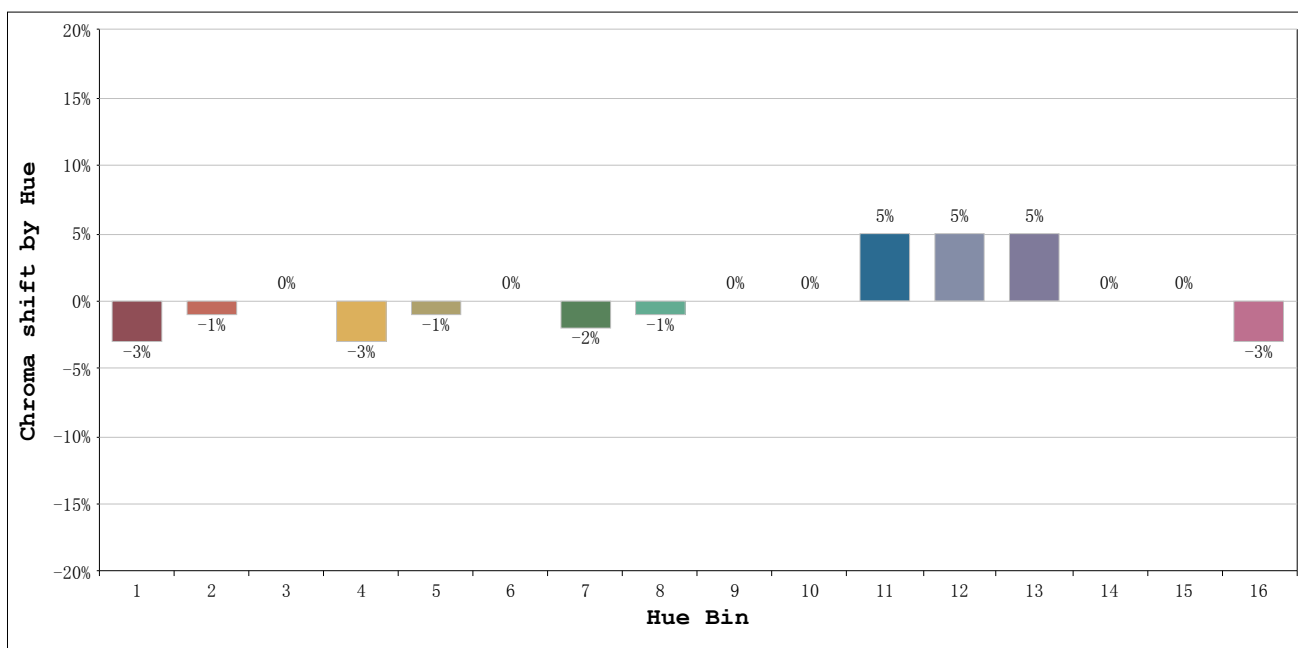
Status: Integral T = 24 ms Ip = 53643 (82%)

Test Mode: Accuracy Test; Sensitivity = High; Tecool: ON

Date:2017-10-17 14:19:12

**Rf: 90**      **CCT: 2790 K**      **u': 0.2594**  
**Rg: 99**      **Duv: -0.0025**      **v': 0.5220**





Hue Bin	Hue Angle	Rf	Graphic shift(%)	
			Chroma	Hue
1	0. 0° - 22. 5°	89	-3	2
2	22. 5° - 45. 0°	92	-1	2
3	45. 0° - 67. 5°	91	0	4
4	67. 5° - 90. 0°	91	-3	0
5	90. 0° - 112. 5°	94	-1	0
6	112. 5° - 135. 0°	95	0	1
7	135. 0° - 157. 5°	93	-2	1
8	157. 5° - 180. 0°	95	-1	2
9	180. 0° - 202. 5°	89	0	6
10	202. 5° - 225. 0°	87	0	7
11	225. 0° - 247. 5°	87	5	7
12	247. 5° - 270. 0°	89	5	1
13	270. 0° - 292. 5°	91	5	-6
14	292. 5° - 315. 0°	80	0	-10
15	315. 0° - 337. 5°	89	0	-4
16	337. 5° - 360. 0°	87	-3	-5