

Colorimetric Parameters

Chromaticity Coordinate: x=0.4068 y=0.3927/u'=0.2359 v'=0.5123

CCT=3484K(Duv=0.0005) Dominant WL:Ld =580.7nm Purity=40.0%

Peak WL:Lp=600.9nm FWHM=156.3nm

Render Index: Ra=87.3

R1 =87	R2 =95	R3 =95	R4 =86	R5 =88	R6 =94	R7 =85
R8 =67	R9 =24	R10=90	R11=88	R12=76	R13=90	R14=98
						R15=80

Photometric & Radiometric Parameters

Flux=401.4 lm Eff.:36.53 lm/W Fe=1.241 W Scotopic:646.64 S/P:1.6111

Electrical parameters

V=24.00 V I=0.4579 A P=10.99 W PF=1.000 F=0.00 Hz

Status: Integral T = 519 ms Ip = 52807 (81%)

Test Mode: Fast Test; Sensitivity = High; Tecool: ON

Model:NF-NEON-WT-MINI2.0-24V-3500K-CRI80-1M

Temperature:25.3Deg

Date:2020-05-28 09:32:49

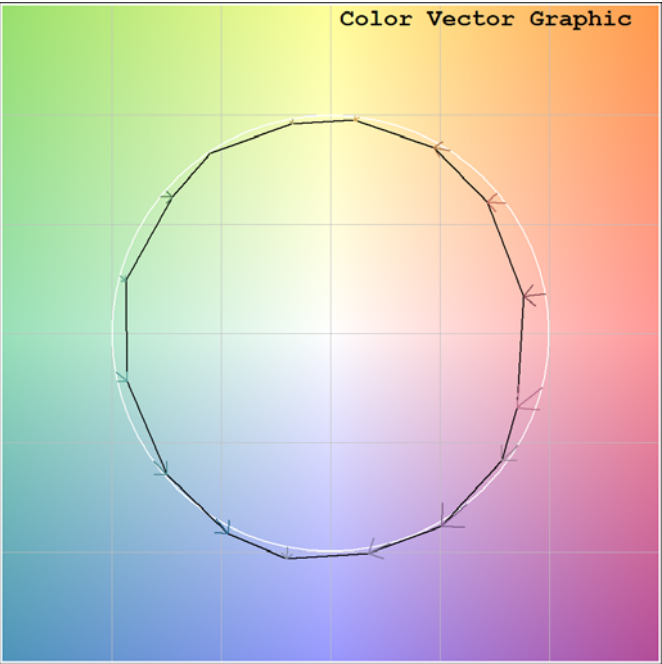
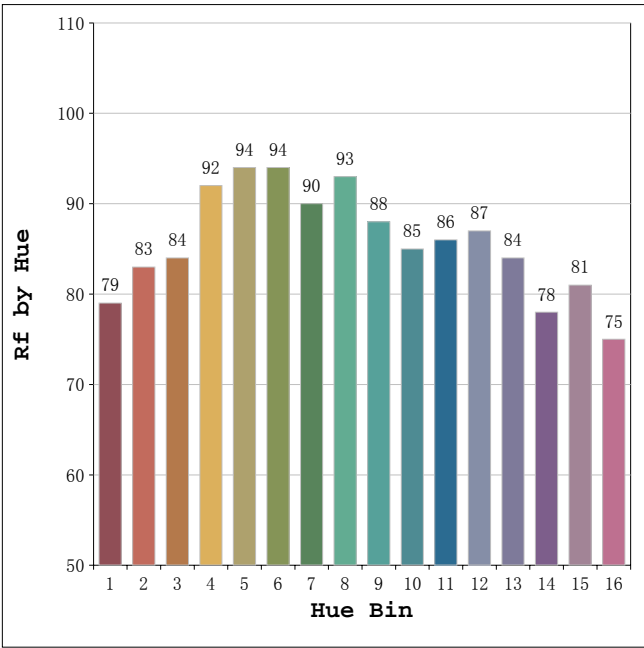
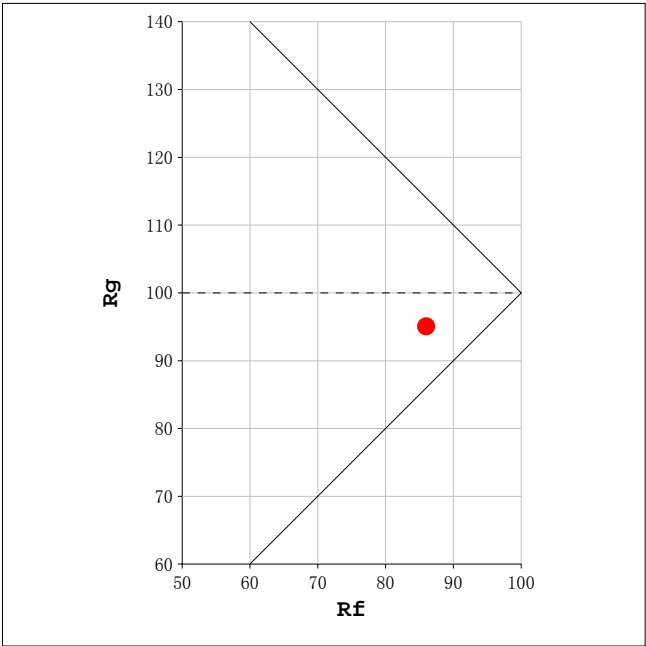
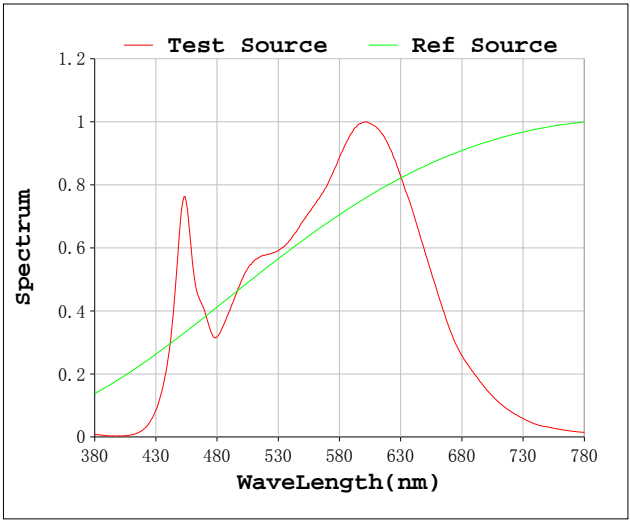
Humidity:63.0%

Mini Neon 2.0

NF-NEON-WT-MINI2.0-24V

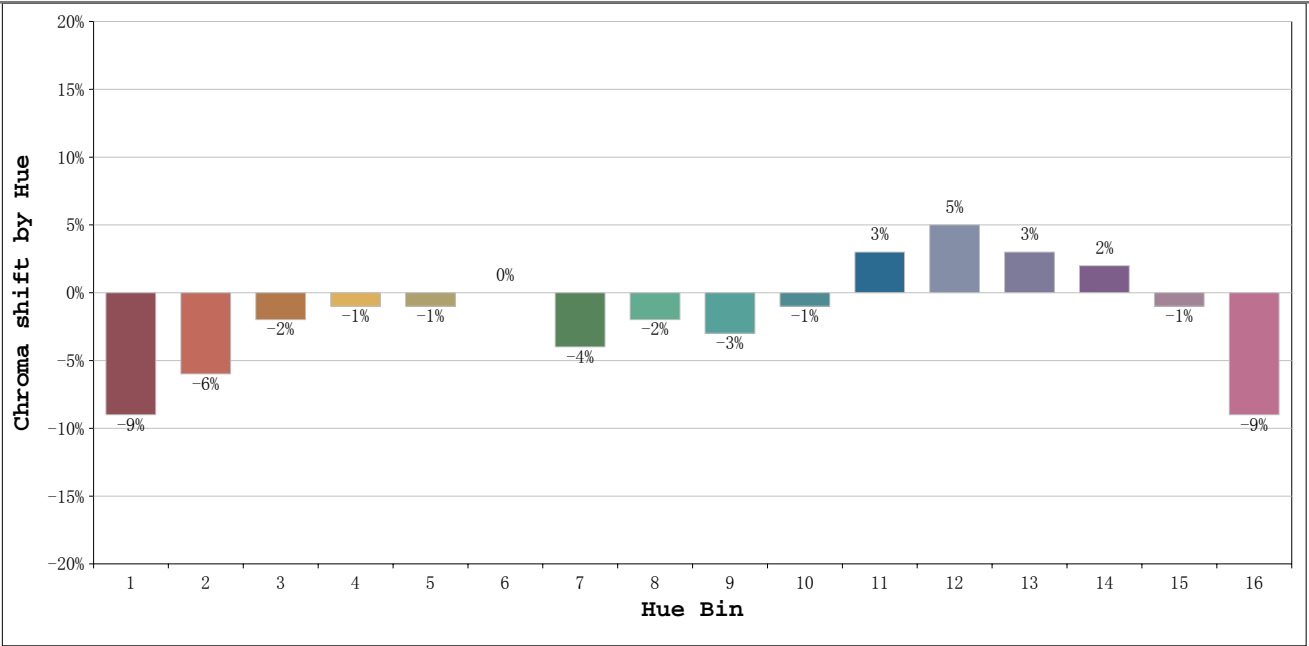


Rf: 86 CCT: 3484 K u': 0.2359
Rg: 95 Duv: 0.0005 v': 0.5123



Mini Neon 2.0

NF-NEON-WT-MINI2.0-24V



			Graphic shift(%)	
Hue Bin	Hue Angle	Rf	Chroma	Hue
1	0. 0° - 22. 5°	79	-9	1
2	22. 5° - 45. 0°	83	-6	5
3	45. 0° - 67. 5°	84	-2	7
4	67. 5° - 90. 0°	92	-1	2
5	90. 0° - 112. 5°	94	-1	1
6	112. 5° - 135. 0°	94	0	0
7	135. 0° - 157. 5°	90	-4	-2
8	157. 5° - 180. 0°	93	-2	2
9	180. 0° - 202. 5°	88	-3	5
10	202. 5° - 225. 0°	85	-1	8
11	225. 0° - 247. 5°	86	3	8
12	247. 5° - 270. 0°	87	5	0
13	270. 0° - 292. 5°	84	3	-9
14	292. 5° - 315. 0°	78	2	-14
15	315. 0° - 337. 5°	81	-1	-9
16	337. 5° - 360. 0°	75	-9	-10