

Colorimetric Parameters

Chromaticity Coordinate: $x=0.4402$ $y=0.4083$ $u'=0.2509$ $v'=0.5235$

CCT=2980K(Duv=0.0012) Dominant WL:Ld =582.5nm Purity=54.7%

Peak WL:Lp=602.4nm FWHM=131.4nm

Render Index:Ra=82.1

R1 =81	R2 =91	R3 =96	R4 =78	R5 =80	R6 =89	R7 =83
R8 =59	R9 =9	R10=79	R11=76	R12=65	R13=83	R14=99 R15=74

Photometric & Radiometric Parameters

Flux=558.3 lm Eff.:48.62 lm/W Fe=1.704 W

Electrical parameters

V=24.00 V I=0.4785 A P=11.48 W PF=1.000 F=0.00 Hz

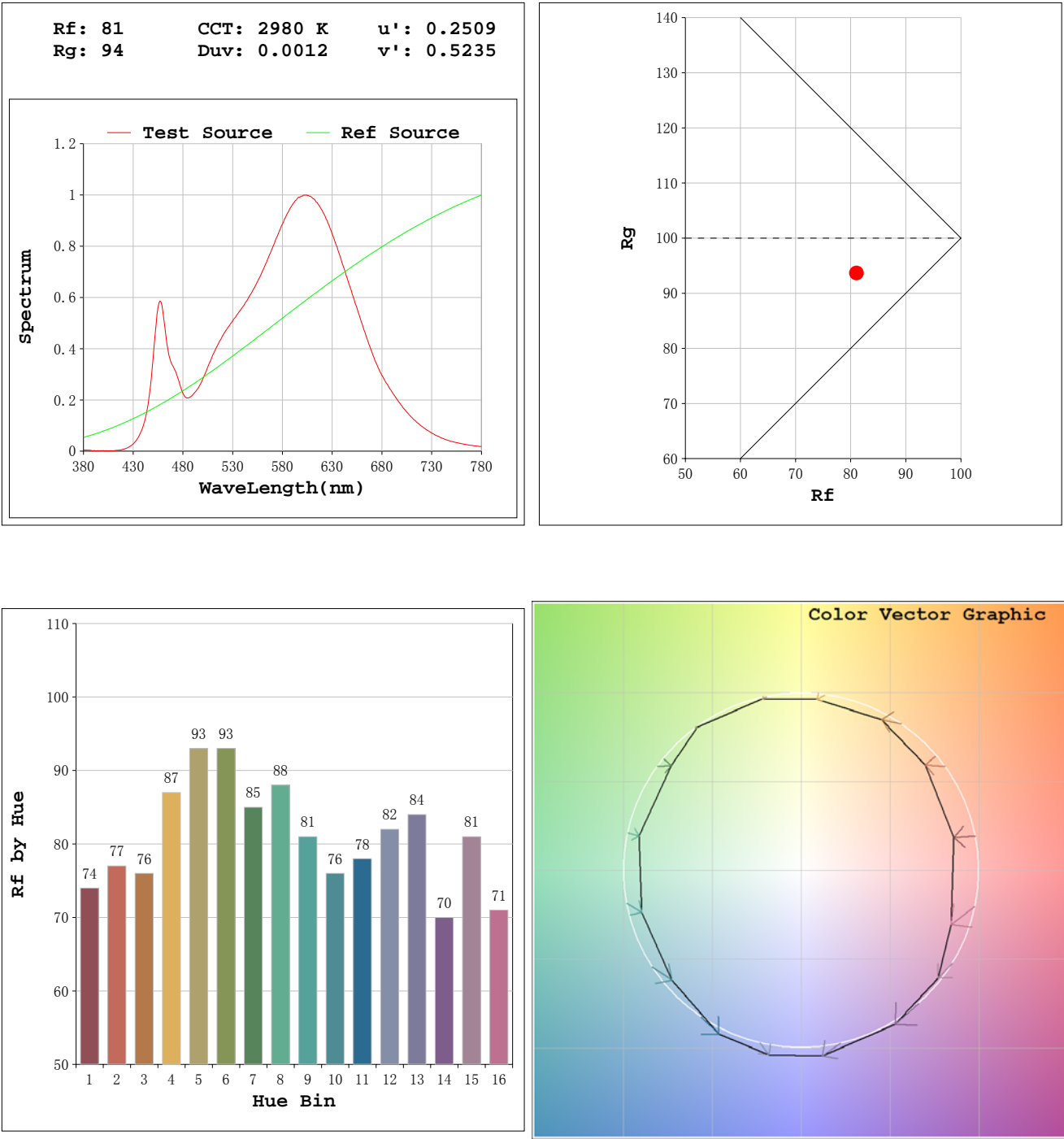
Status: Integral T = 304 ms Ip = 50231 (77%)

Test Mode: Fast Test; Sensitivity = High; Tecool: ON

Date:2019-03-05 11:47:30

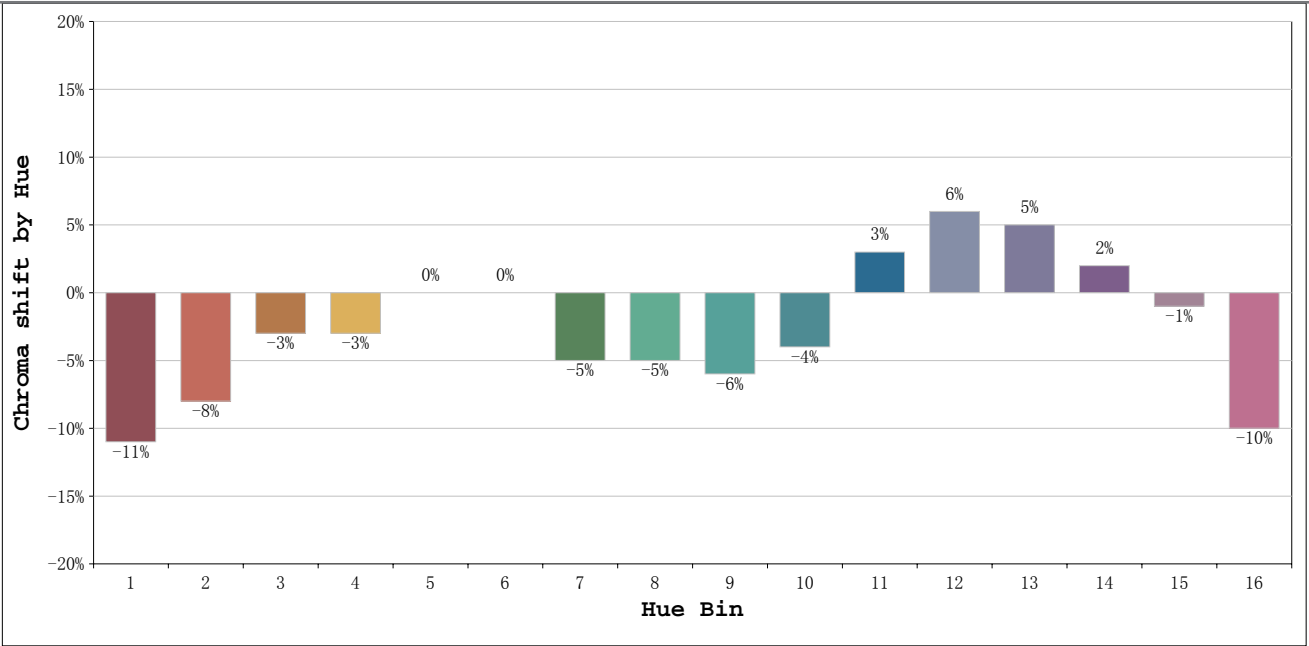
NEON ROUND WHITE

NF-NEON-W-ROUND-24V-3000K



NEON ROUND WHITE

NF-NEON-W-ROUND-24V-3000K



			Graphic shift(%)	
Hue Bin	Hue Angle	Rf	Chroma	Hue
1	0. 0° - 22. 5°	74	-11	1
2	22. 5° - 45. 0°	77	-8	7
3	45. 0° - 67. 5°	76	-3	10
4	67. 5° - 90. 0°	87	-3	4
5	90. 0° - 112. 5°	93	0	3
6	112. 5° - 135. 0°	93	0	0
7	135. 0° - 157. 5°	85	-5	-4
8	157. 5° - 180. 0°	88	-5	1
9	180. 0° - 202. 5°	81	-6	7
10	202. 5° - 225. 0°	76	-4	13
11	225. 0° - 247. 5°	78	3	14
12	247. 5° - 270. 0°	82	6	6
13	270. 0° - 292. 5°	84	5	-10
14	292. 5° - 315. 0°	70	2	-16
15	315. 0° - 337. 5°	81	-1	-11
16	337. 5° - 360. 0°	71	-10	-12